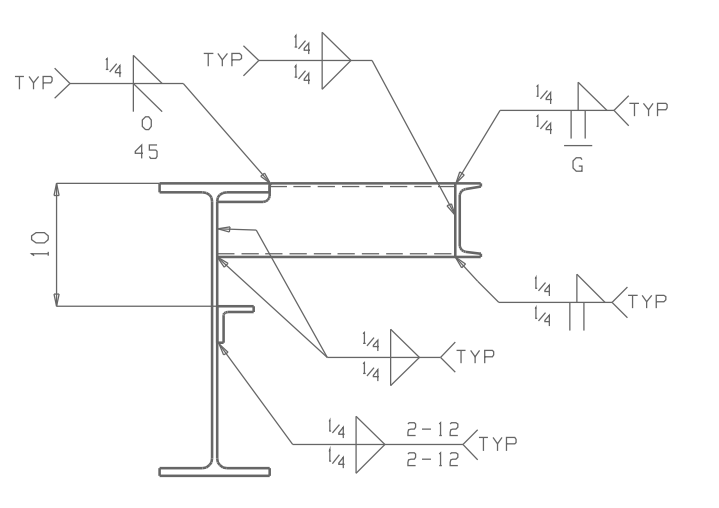


**ONE BEAM 102-36B**  
 W 23 1/2 x 7 1/2  
 F 9 x 1 1/2



**Section A-A**



### BILL OF MATERIAL

ADVANCE	SEQ.	SEQ.	MARK	QUAN.	SHAPE	LENGTH	REMARKS	WT.	WEIGHT	
MILL #	NO.	QUAN	TOTAL					UNIT	TOTAL	
6-4	102	1	102-36B	ONE	BEAM				2480	
			102-36B	1	W24x76	24	8 1/8	A572-50	1875	1875
			c105	1	C6x10.5	25	2 1/4	A572-50	264	264
			c156	1	C6x10.5	2	1 1/4	A572-50	22	22
			c157	2	C6x10.5	2	6 1/4	A572-50	26	53
			c158	1	C6x10.5	2	1 1/4	A572-50	22	22
			a247	1	L3x3x 1/2	4	9	A36	45	45
			a115	1	L3x3x 1/2	5	4 7/8	A36	51	51
			a244	1	L3x3x 1/2	5	8 1/2	A36	54	54
			a112	1	L3x3x 1/2	5	8 1/2	A36	54	54
			p128	2	PL 3/8 x 8 3/4	1	9	A572-50	20	40
					FIELD BOLTS					
				14	TC 7/8 Dia A325N	0	3	2HD WASH		

Total weight :2480

### REVISION & DISTRIBUTION BOX

REV.	DATE	DESCRIPTION	BY	TO APP'L	TO SHOP	TO FIELD

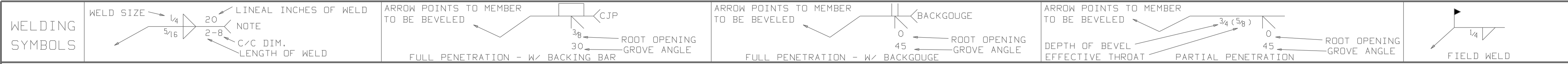
DRAWINGS ARE SUBMITTED FOR APPROVAL IN ACCORDANCE WITH AISC MANUAL NINTH EDITION - PAGE 5-229 PARAGRAPH 4.2 AND PAGE 5-250 SECTION 4.

### SHOP NOTES

- ALL RUNNING DIMENSIONS ARE TAKEN FROM THE  $\odot$  LINE.
  - ALL GAS RE-ENTRANT CUTS WILL HAVE A RADIUS OF 1/2" UNLESS NOTED
  - ALL SHOP BOLTS SHALL BE SNUG TIGHT UNLESS NOTED
- MATERIAL: ASTM A572-50 UNLESS NOTED  
 WELD: E70XX-LH ELECTRODES  
 OPEN HOLES: 15/16 UNLESS NOTED
- PAINT: PREP: SP-6  
 PRIME: SHERWIN WILLIAMS ZINC CLAD III H.S. 3-5 MILS DFT  
 FINISH:
- BOLTS: A325, BLACK, HEX HEAD TENSION CONTROL (U.N.O.)

DWG. DESCRIPTION: BEAM REF. ERECTION DWG:

CUSTOMER:	DWG. NO.
JOB TITLE:	102-36
LOCATION:	JOB. NO.
DRAWN BY:	DATE:
CHK'D BY:	DATE:



# BILL OF MATERIAL

ADVANCE	SEQ. NO.	SEQ. QUAN	MARK	QUAN. TOTAL	SHAPE	LENGTH	REMARKS	WT. UNIT	WEIGHT TOTAL	
3-44	104	1	104-52B	ONE	BEAM			3788	3788	
			104-52B	1	W27x84	42	15 <sup>1</sup> / <sub>16</sub>	A572-50	3542	3542
			wt101	1	WT4x17.5	1	2	A572-50	20	20
			f245	6	FL <sup>3</sup> / <sub>8</sub> x8	1	1	A572-50	18	108
			f502	6	FL <sup>3</sup> / <sub>8</sub> x8	0	8 <sup>7</sup> / <sub>16</sub>	A572-50	12	72
			p128	2	PL <sup>3</sup> / <sub>8</sub> x8 <sup>3</sup> / <sub>4</sub>	1	9	A572-50	20	40
			p550	1	PL <sup>3</sup> / <sub>8</sub> x5 <sup>3</sup> / <sub>4</sub>	0	10 <sup>1</sup> / <sub>16</sub>	A572-50	6	6
					FIELD BOLTS					
				12	TC <sup>7</sup> / <sub>8</sub> Dia A325N	0	3 <sup>1</sup> / <sub>4</sub>	2HD WASH		
				4	TC <sup>7</sup> / <sub>8</sub> Dia A325N	0	2 <sup>3</sup> / <sub>4</sub>	1HD WASH		

Total weight : 3788

## REVISION & DISTRIBUTION BOX

REV.	DATE	DESCRIPTION	BY	TO APP'L	TO SHOP	TO FIELD

DRAWINGS ARE SUBMITTED FOR APPROVAL IN ACCORDANCE WITH AISC MANUAL NINTH EDITION - PAGE 5-229 PARAGRAPH 4.2 AND PAGE 5-250 SECTION 4.

### SHOP NOTES

- 1) ALL RUNNING DIMENSIONS ARE TAKEN FROM THE  $\odot$  LINE.
- 2) ALL GAS RE-ENTRANT CUTS WILL HAVE A RADIUS OF 1/2" UNLESS NOTED
- 3) ALL SHOP BOLTS SHALL BE SNUG TIGHT UNLESS NOTED

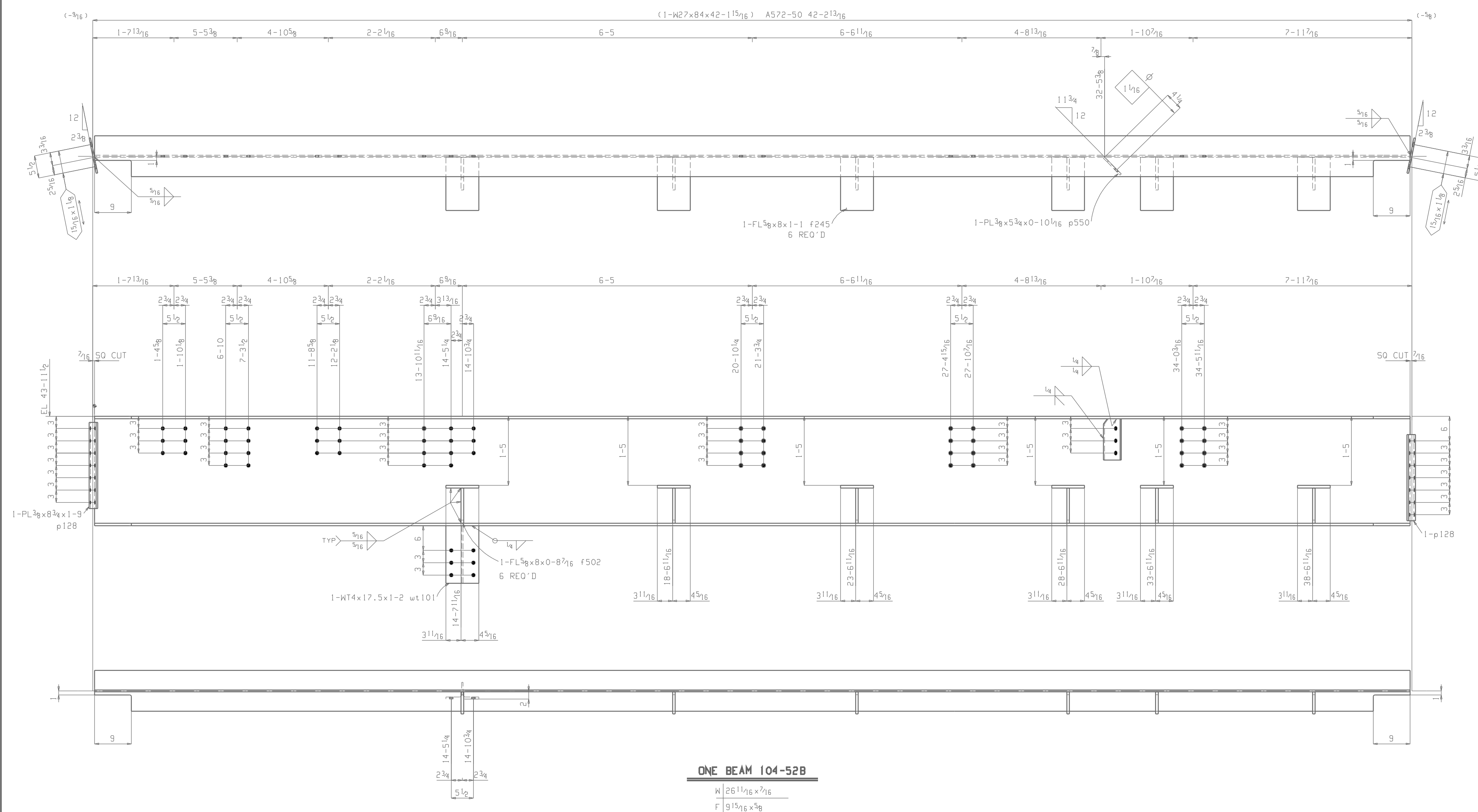
MATERIAL: ASTM A572-50 UNLESS NOTED  
 WELD: E70XX-LH ELECTRODES  
 OPEN HOLES: 15<sup>1</sup>/<sub>16</sub> UNLESS NOTED

PAINT: PREP: SP-6  
 PRIME: SHERWIN WILLIAMS ZINC CLAD III H.S. 3-5 MILS DFT  
 FINISH:

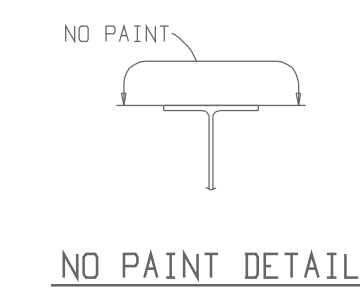
BOLTS: A325, BLACK, HEX HEAD TENSION CONTROL (U.N.O.)

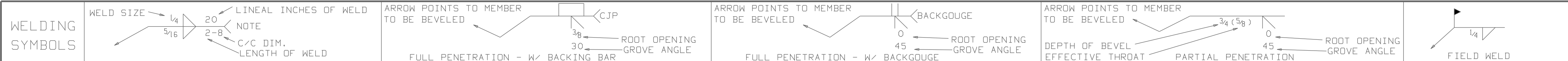
DWG. DESCRIPTION: BEAM REF. ERECTION DWG:

CUSTOMER:	DWG. NO.
JOB TITLE:	104-52
LOCATION:	JOB. NO.
DRAWN BY:	DATE:
CHK'D BY:	DATE:



**ONE BEAM 104-52B**  
 W 26<sup>1</sup>/<sub>2</sub> x 7<sup>1</sup>/<sub>2</sub>  
 F 9<sup>15</sup>/<sub>16</sub> x 3<sup>8</sup>/<sub>8</sub>





### BILL OF MATERIAL

ADVANCE	SEQ.	SEQ.	MARK	QUAN.	SHAPE	LENGTH	REMARKS	WT.	WEIGHT	
MILL #	NO.	QUAN.	TOTAL					UNIT	TOTAL	
3-16	104	1	104-54B	ONE	BEAM			4124	4122	
			104-54B	1	W30x99	30	5 1/2	A572-50	3015	3015
			p308	4	PL 1/2 x 4 15/16	2	4 3/16	A572-50	20	79
			p304	1	PL 1/2 x 20	6	0	A572-50	613	613
			p353	4	PL 3/4 x 14	2	7 1/2	A572-50	94	375
			p128	2	PL 3/8 x 8 3/4	1	9	A572-50	20	40
					FIELD BOLTS					
				12	TC 7/8 Dia A325N	0	3 1/4	2HD WASH		
				4	TC 7/8 Dia A325N	0	2 3/4	1HD WASH		

Total weight : 4122

#### REVISION & DISTRIBUTION BOX

REV.	DATE	DESCRIPTION	BY	TO APP'L	TO SHOP	TO FIELD

DRAWINGS ARE SUBMITTED FOR APPROVAL IN ACCORDANCE WITH AISC MANUAL NINTH EDITION - PAGE 5-229 PARAGRAPH 4.2 AND PAGE 5-250 SECTION 4.

#### SHOP NOTES

- 1) ALL RUNNING DIMENSIONS ARE TAKEN FROM THE  $\odot$  LINE.
- 2) ALL GAS RE-ENTRANT CUTS WILL HAVE A RADIUS OF 1/2" UNLESS NOTED
- 3) ALL SHOP BOLTS SHALL BE SNUG TIGHT UNLESS NOTED

MATERIAL: ASTM A572-50 UNLESS NOTED  
 WELD: E70XX-LH ELECTRODES  
 OPEN HOLES: 15/16 UNLESS NOTED

PAINT: PREP:  
 PRIME:  
 FINISH:

BOLTS:

DWG. DESCRIPTION: BEAM REF. ERECTION DWG:

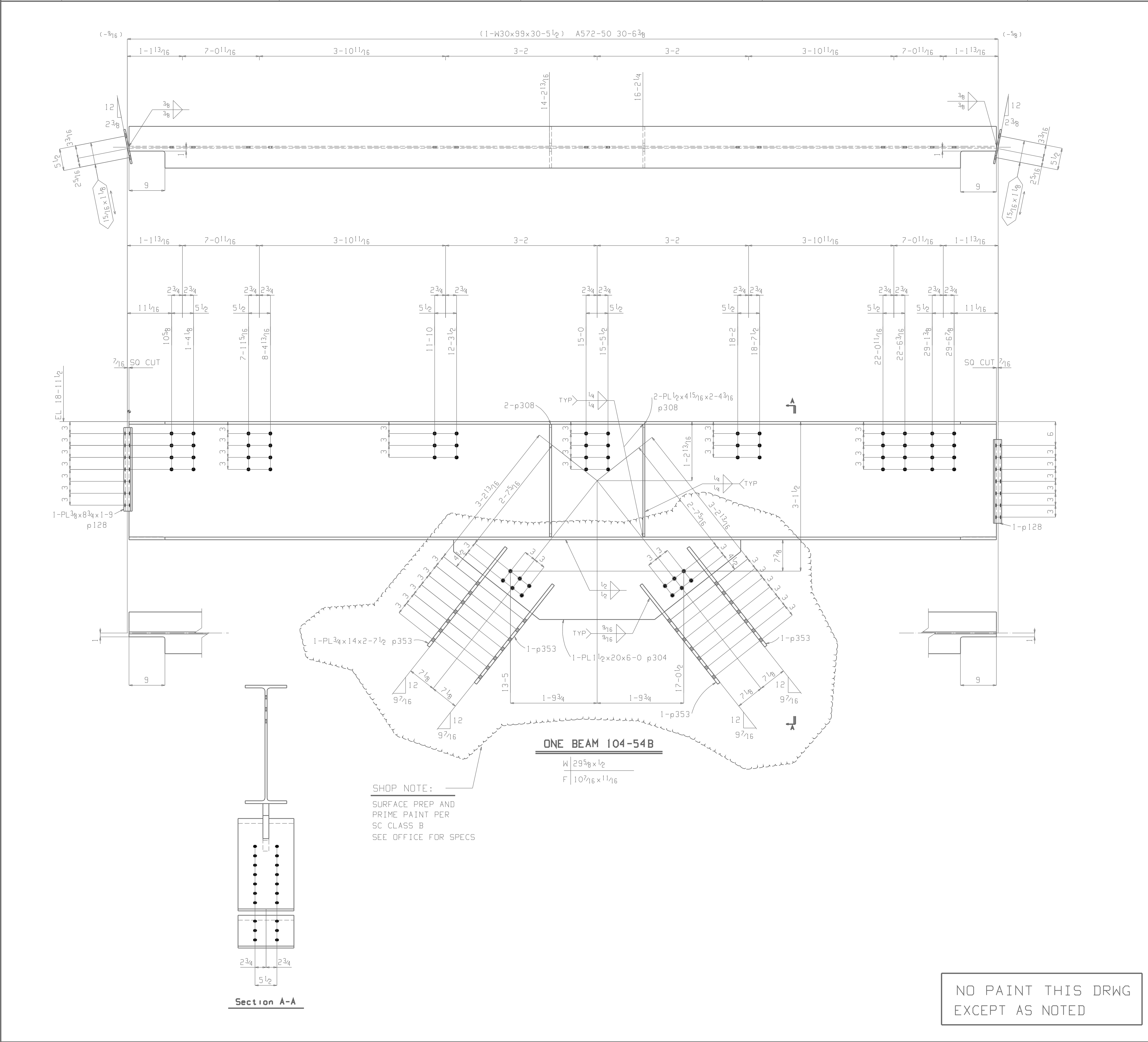
CUSTOMER:  
 JOB TITLE:  
 LOCATION:

DRAWN BY: DATE: CHK'D BY: DATE:

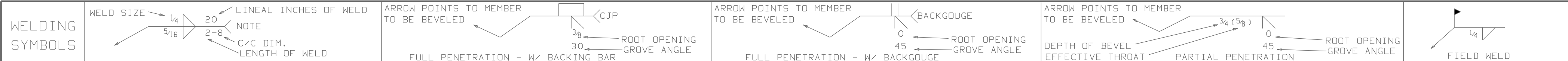
DWG. NO. 104-54

JOB. NO.

NO PAINT THIS DRWG EXCEPT AS NOTED



Jun. 12. 2002 09:29:52 AM



### BILL OF MATERIAL

ADVANCE	SEQ.	SEQ.	MARK	QUAN.	SHAPE	LENGTH	REMARKS	WT.	WEIGHT	
MILL #	NO.	QUAN.	TOTAL					UNIT	TOTAL	
11-17	110	1	110-34B	ONE	BEAM			2290	2290	
			110-34B	1	W27x84	24	8 <sup>1</sup> / <sub>8</sub>	A572-50	2073	2073
			p713	1	PL <sup>1</sup> / <sub>4</sub> x <sup>3</sup> / <sub>4</sub>	1	6 <sup>1</sup> / <sub>2</sub>	A572-50	1	1
			p634	1	PL <sup>1</sup> / <sub>4</sub> x <sup>1</sup> / <sub>2</sub>	1	0 <sup>3</sup> / <sub>4</sub>	A572-50		
			p711	1	PL <sup>1</sup> / <sub>2</sub> x16	1	6 <sup>7</sup> / <sub>8</sub>	A572-50	43	43
			p712	1	PL <sup>1</sup> / <sub>2</sub> x18	1	6 <sup>7</sup> / <sub>8</sub>	A572-50	48	48
			p633	1	PL <sup>1</sup> / <sub>2</sub> x12 <sup>1</sup> / <sub>16</sub>	1	4	A572-50	27	27
			p632	1	PL <sup>1</sup> / <sub>2</sub> x12 <sup>1</sup> / <sub>2</sub>	1	4	A572-50	28	28
			p722	1	PL <sup>3</sup> / <sub>8</sub> x9 <sup>1</sup> / <sub>8</sub>	1	1	A572-50	13	13
			p723	1	PL <sup>3</sup> / <sub>8</sub> x8 <sup>15</sup> / <sub>16</sub>	1	1	A572-50	12	12
			p251	2	PL <sup>3</sup> / <sub>8</sub> x8 <sup>3</sup> / <sub>4</sub>	2	0	A572-50	22	44
			p21	1	PL <sup>1</sup> / <sub>4</sub> x <sup>1</sup> / <sub>2</sub>	1	3 <sup>3</sup> / <sub>4</sub>	A572-50	1	1
					FIELD BOLTS					
				10	TC <sup>7</sup> / <sub>8</sub> Dia A325N	0	3	2HD WASH		
				12	TC <sup>7</sup> / <sub>8</sub> Dia A325N	0	2 <sup>1</sup> / <sub>4</sub>	1HD WASH		

Total weight :2290

### REVISION & DISTRIBUTION BOX

REV.	DATE	DESCRIPTION	BY	TO APP'L	TO SHOP	TO FIELD
△						
△						
△						
△						
△						
△						
△						
△						
△						
△						

DRAWINGS ARE SUBMITTED FOR APPROVAL IN ACCORDANCE WITH AISC MANUAL NINTH EDITION - PAGE 5-229 PARAGRAPH 4.2 AND PAGE 5-250 SECTION 4.

### SHOP NOTES

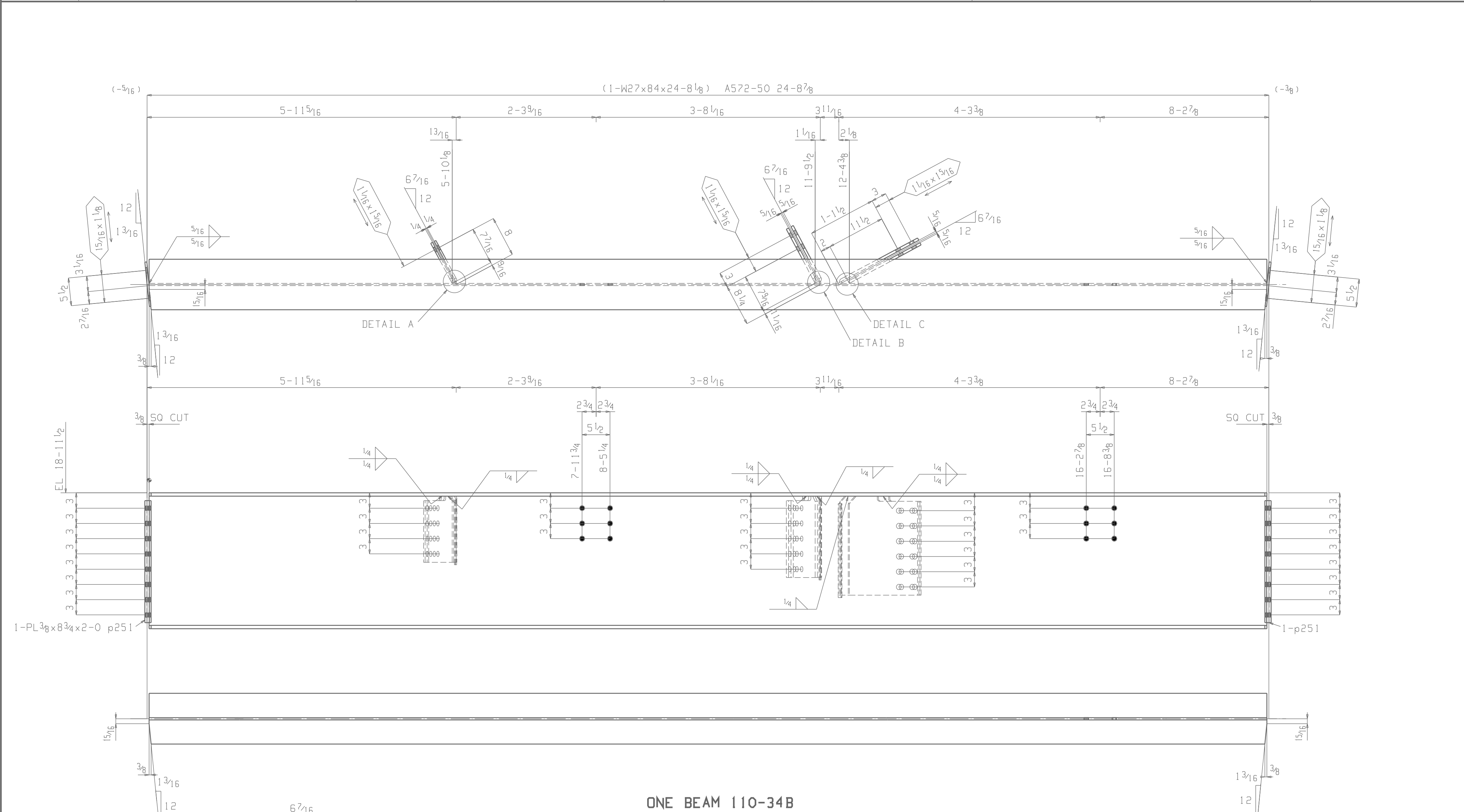
- ALL RUNNING DIMENSIONS ARE TAKEN FROM THE LINE.
  - ALL GAS RE-ENTRANT CUTS WILL HAVE A RADIUS OF 1/2" UNLESS NOTED
  - ALL SHOP BOLTS SHALL BE SNUG TIGHT UNLESS NOTED
- MATERIAL: ASTM A572-50 UNLESS NOTED  
WELD: E70XX-LH ELECTRODES  
OPEN HOLES: 15/16 UNLESS NOTED

PAINT: PREP:  
PRIME:  
FINISH:

BOLTS:

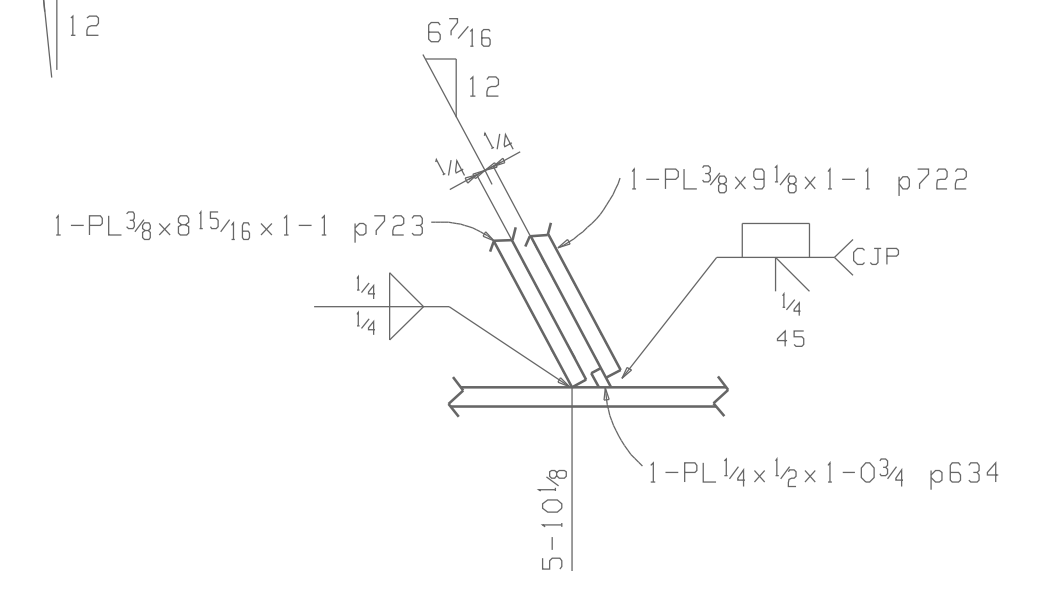
DWG. DESCRIPTION: BEAM REF. ERECTION DWG:

CUSTOMER:	DWG. NO.
JOB TITLE:	110-34
LOCATION:	JOB. NO.
DRAWN BY:	DATE:
CHK'D BY:	DATE:

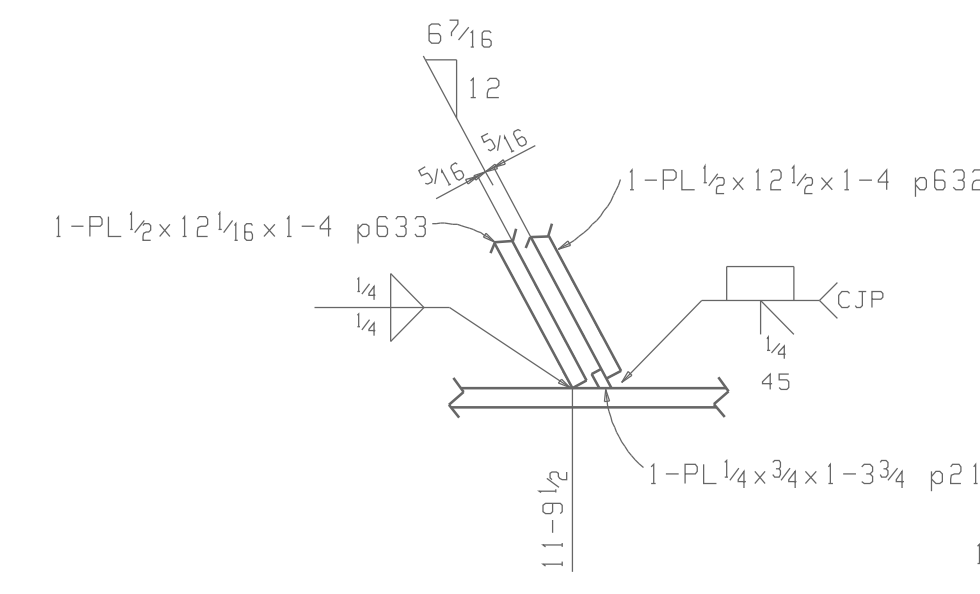


### ONE BEAM 110-34B

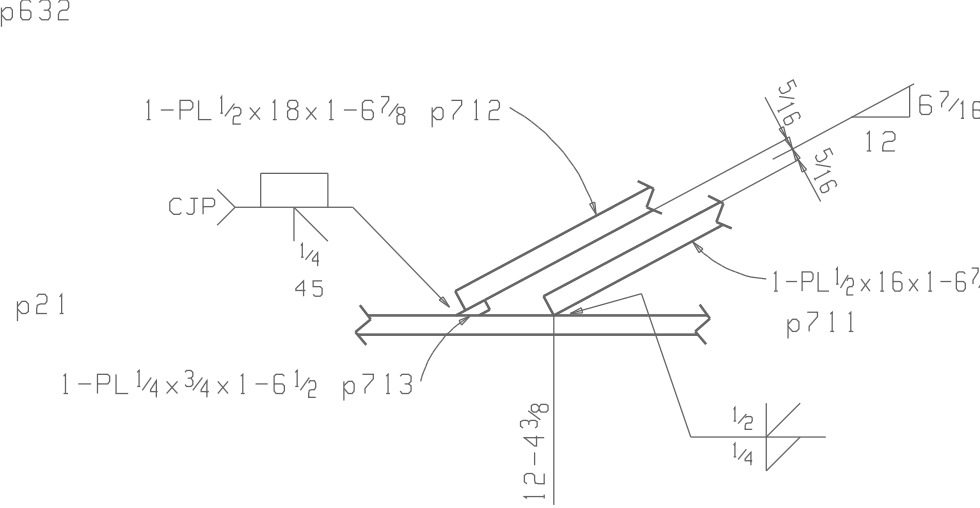
W	26 11/16 x 7/16
F	9 15/16 x 5/8



DETAIL A



DETAIL B



DETAIL C

NO PAINT  
THIS DRAWING